



Insurance in figures 2020

Insurance market in Poland



The author of this brochure is the Polish Chamber of Insurance. Presented financial data relate to Polish insurers reporting to the Polish Financial Supervision Authority and to the Polish Chamber of Insurance.

This publication is copyright protected. May be quoted, provided the source is credited.

Polish Chamber of Insurance is not liable for effects of any potential decisions made based on this publication.

Insurance in figures 2020

Insurance market in Poland

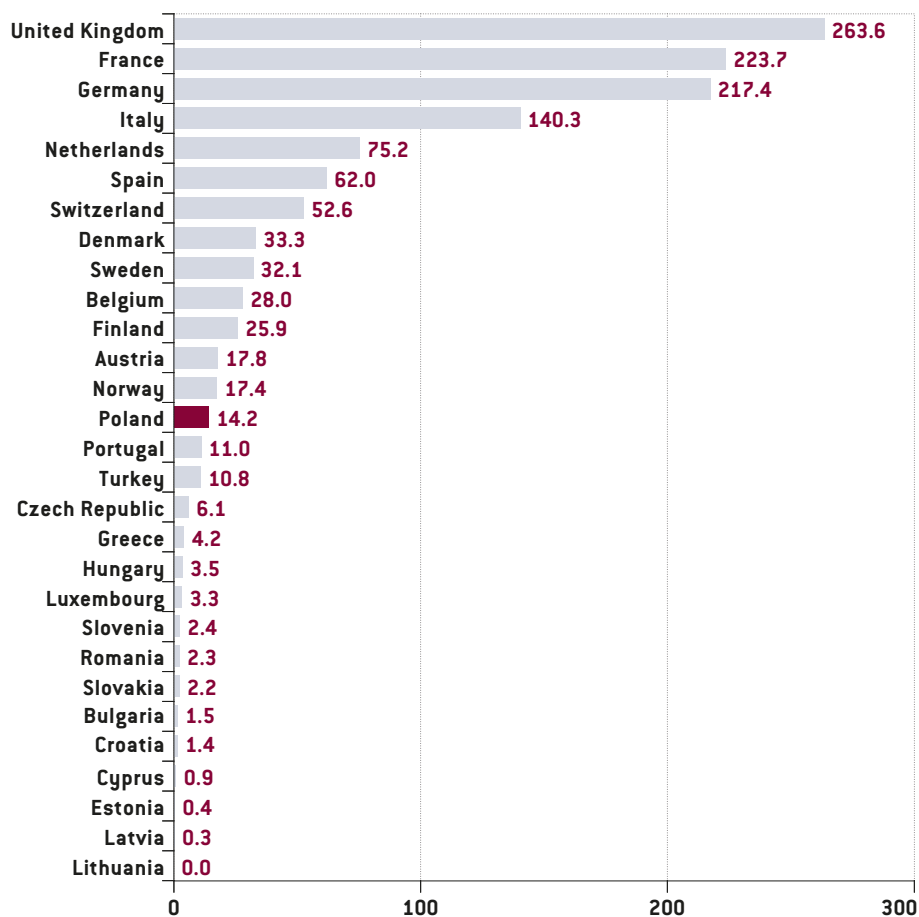
TABLE OF CONTENTS

I.	POLISH INSURANCE COMPARED TO THE REST OF EUROPE	5
II.	ROLE OF INSURANCE IN THE NATIONAL ECONOMY	6
III.	INSURANCE COMPANIES' ASSETS	7
IV.	GROSS WRITTEN PREMIUM	8
	A. LIFE INSURANCE	9
	B. NON-LIFE INSURANCE (EXCLUDING MOTOR INSURANCE)	10
	C. MOTOR INSURANCE	11
V.	CLAIMS AND BENEFITS PAID	12
VI.	MOTOR THIRD PARTY LIABILITY INSURANCE	14
VII.	MOTOR HULL INSURANCE	15
VIII.	NUMBER OF NON-LIFE INSURANCE POLICIES	16
IX.	OCOMPULSORY AGRICULTURAL INSURANCE	17
X.	HEALTH INSURANCE	18
XI.	BANCASSURANCE	19
XII.	INSURANCE ACTIVITY TECHNICAL RESULT	20
XIII.	INSURANCE ACTIVITY FINANCIAL RESULT	22
XIV.	INSURANCE COMPANIES' INVESTMENTS	24
XV.	INSURANCE COMPANIES' EQUITY	26
XVI.	INSURANCE AND REINSURANCE COMPANIES, BROKERS AND AGENTS	28

I. POLAND COMPARED TO OTHER EUROPEAN INSURANCE MARKETS

According to Insurance Europe report, in 2019 United Kingdom remained the largest European insurance market before France and Germany, respectively.

Figure 1. Gross written premium in European countries in 2019 (EUR billion)

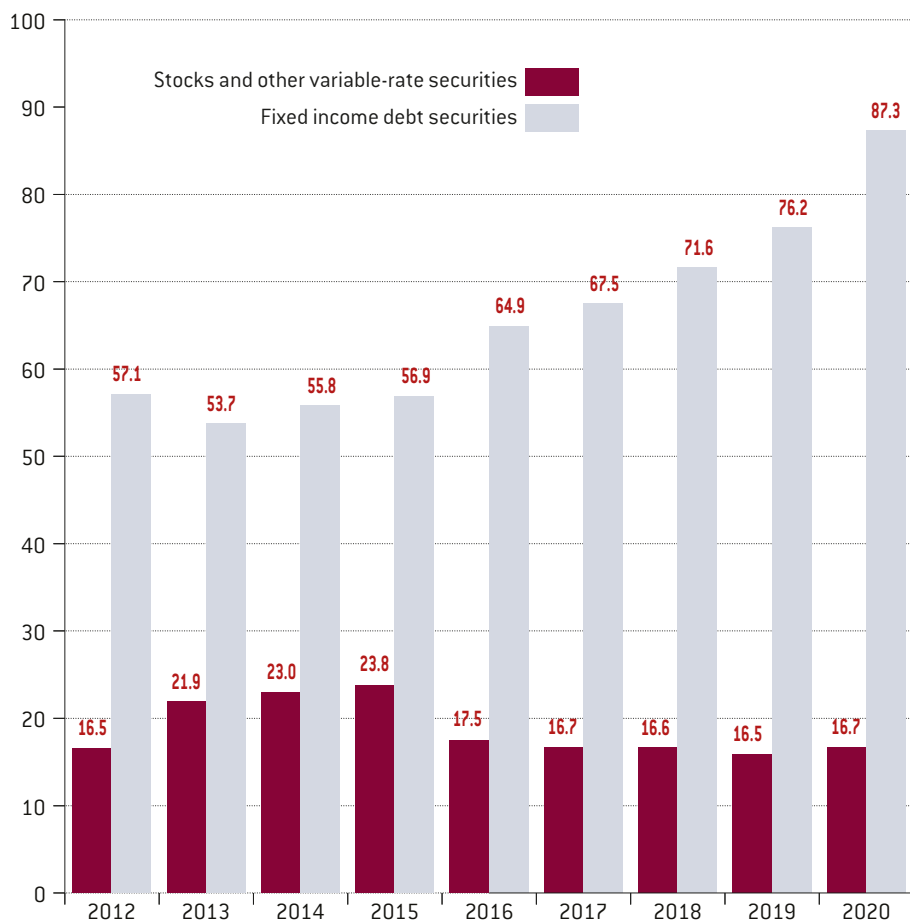


Source: Insurance Europe

II. ROLE OF INSURANCE INDUSTRY IN THE NATIONAL ECONOMY

Insurance industry stabilizes business cycles. Insurance companies are also long-term investors in the national economy and in Polish companies.

Figure 2. Value of investments of national insurance companies in fixed and variable-rate securities (PLN billion)

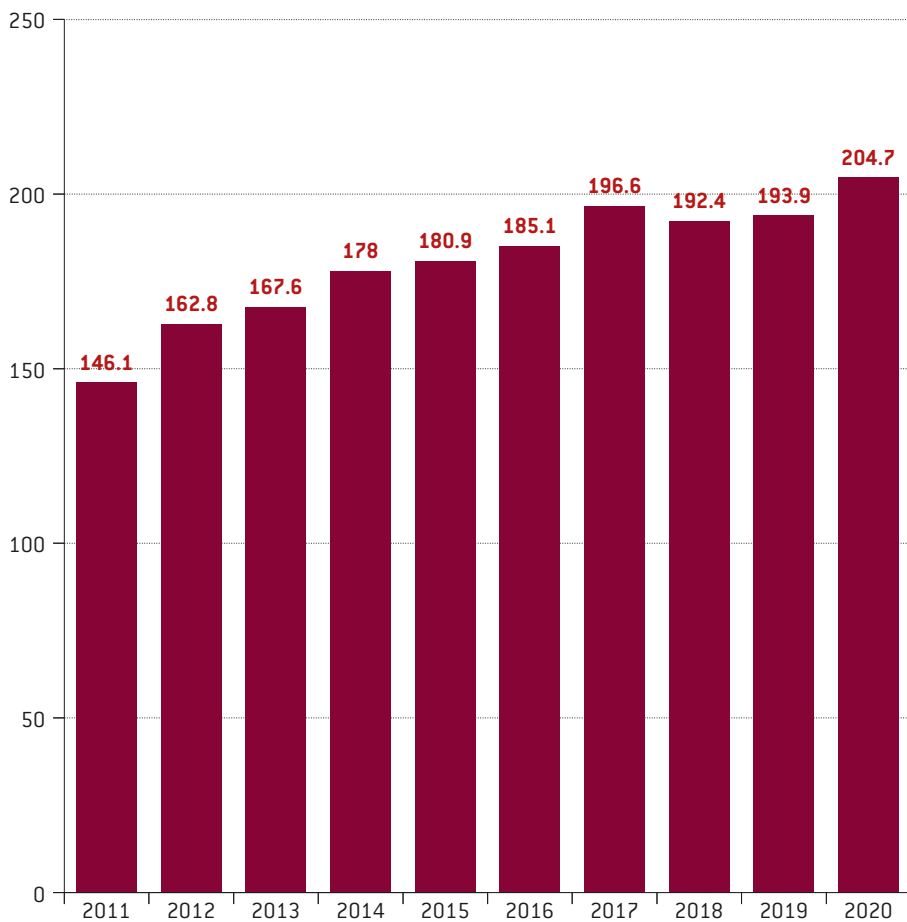


Source: Polish Chamber of Insurance, Polish Financial Supervision Authority

III. INSURANCE COMPANIES' ASSETS

At the end of 2020 total assets of Polish insurance companies amounted to PLN 204.7 billion.

Figure 3. Polish insurance companies' assets (PLN billion)



Source: Polish Chamber of Insurance, Polish Financial Supervision Authority

IV. GROSS WRITTEN PREMIUM

In 2020 insurance gross written premium totalled PLN 63.4 billion, with 33% share of life and 67% of non-life segment.

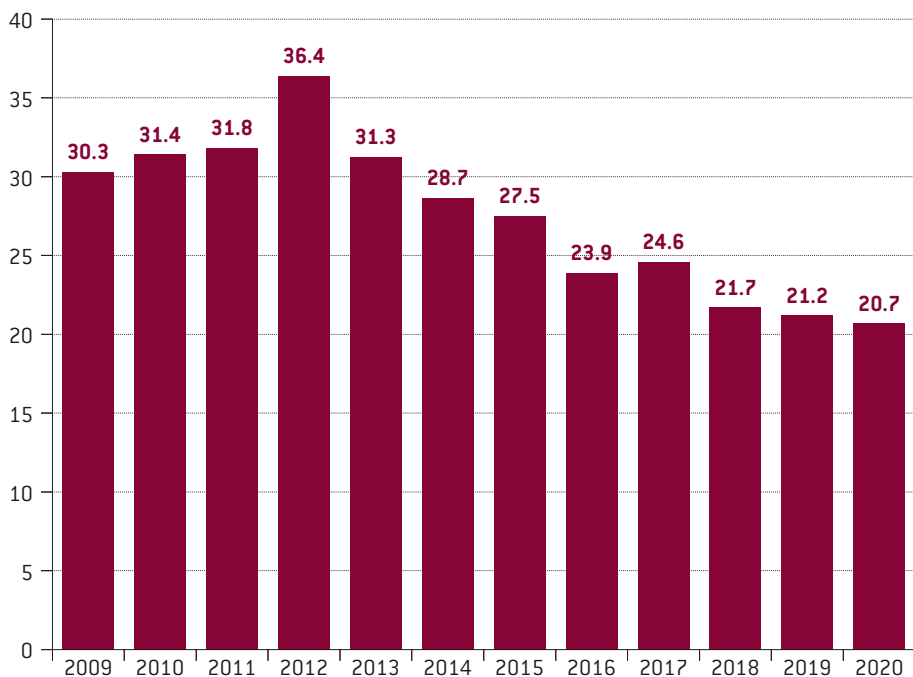
gross written
premium in 2020
PLN **63.4** billion

including:

life premium
PLN **20.7** billion

non-life premium
PLN **42.7** billion

Figure 4. Life gross written premium (PLN billion)



Source: Polish Chamber of Insurance, Polish Financial Supervision Authority

gross written premium in 2020
PLN 20.7 billion
 including:

health riders
 PLN 6.6 billion

simple life
 PLN 7.9 billion

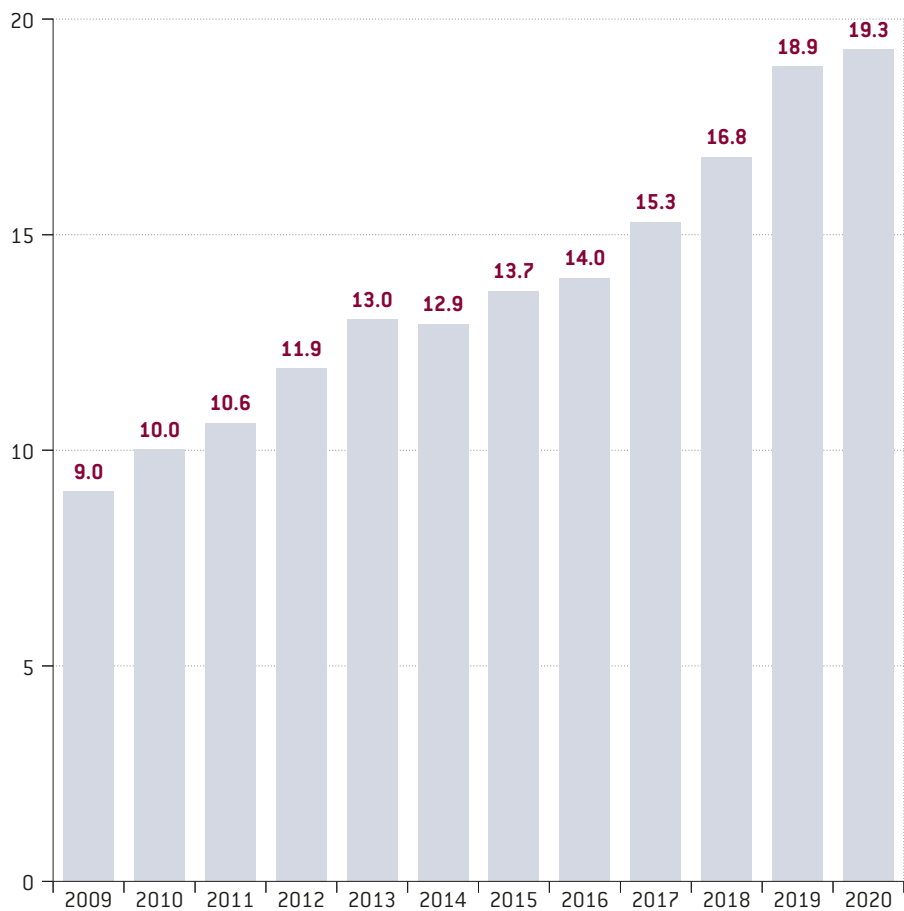
juvenile
 PLN 0.1 billion

unit linked
 PLN 5.9 billion

annuity
 PLN 0.16 billion

B. NON-LIFE INSURANCE (EXCLUDING MOTOR INSURANCE)

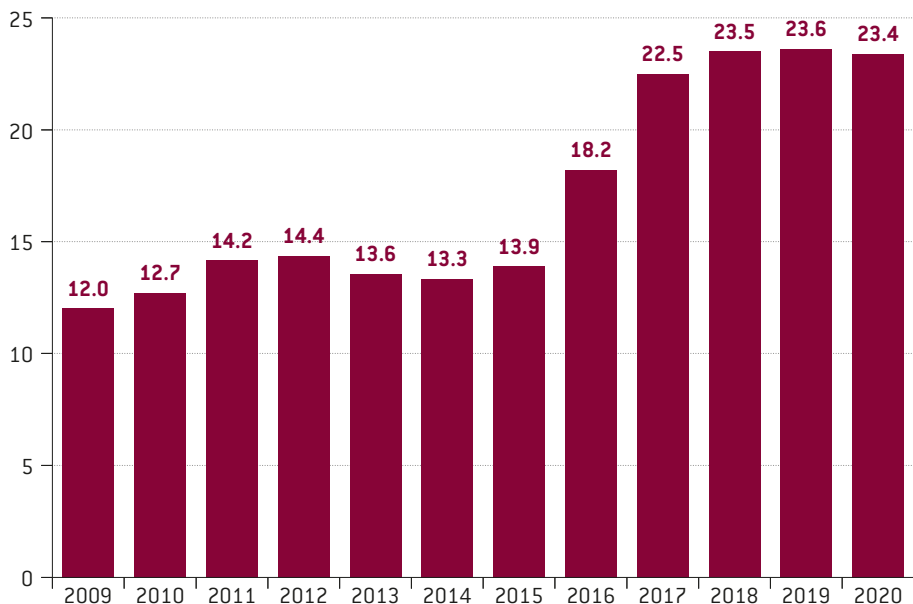
Figure 5. Non-life gross written premium (PLN billion)



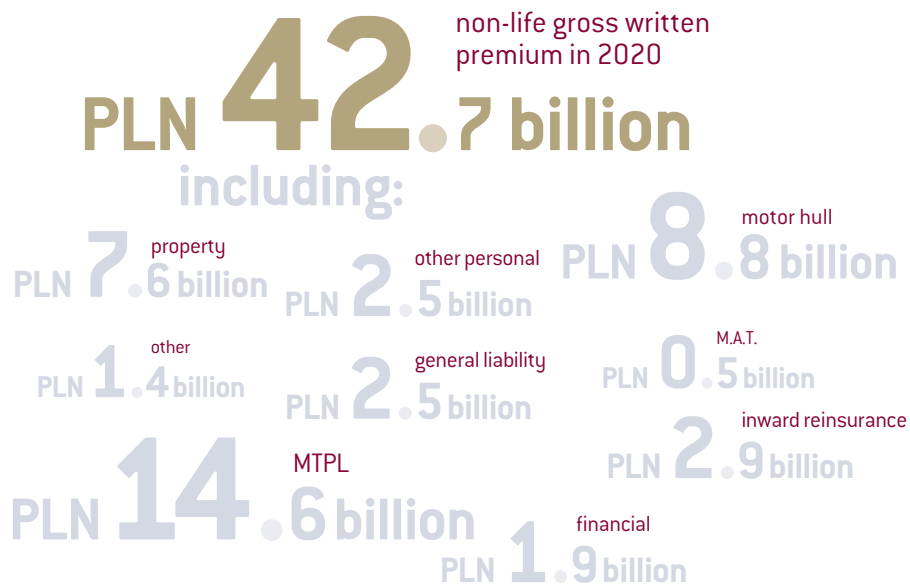
Source: Polish Chamber of Insurance, Polish Financial Supervision Authority

C. MOTOR INSURANCE

Figure 6. Motor insurance gross written premium (PLN billion)



Source: Polish Chamber of Insurance, Polish Financial Supervision Authority

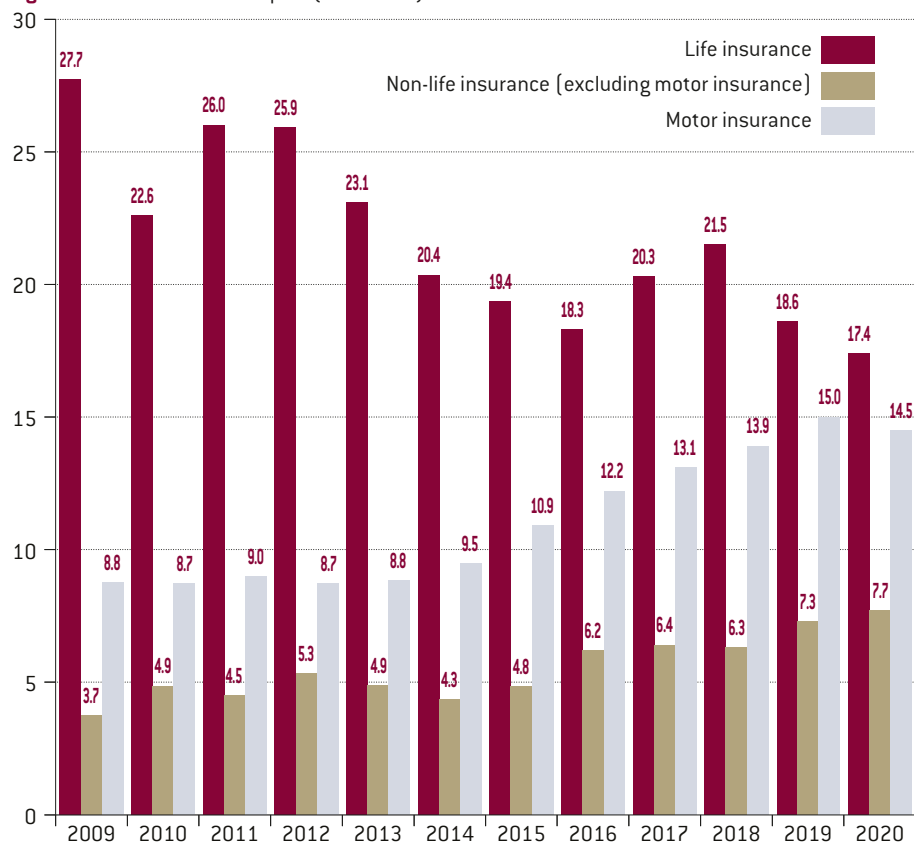


V. CLAIMS AND BENEFITS PAID

Claims and benefits paid
by the insurers in 2019 totalled

PLN 39.6 billion

Figure 7. Claims and benefits paid (PLN billion)



Source: Polish Chamber of Insurance, Polish Financial Supervision Authority

life claims
and benefits paid

PLN **17.4** billion

including:

simple life
PLN **6.4** billion

unit linked
PLN **8.3** billion

health riders
PLN **2.5** billion

juvenile
PLN **0.1** billion

annuity
PLN **0.1** billion

non-life claims
and benefits paid

PLN **22.2** billion

including:

motor hull
PLN **5.5** billion

MTPL
PLN **9.0** billion

property
PLN **3.4** billion

other
PLN **0.6** billion

general liability
PLN **1.0** billion

inward reinsurance
PLN **1.3** billion

financial
PLN **0.7** billion

other personal
PLN **0.7** billion

M.A.T.
PLN **0.2** billion

VI. OC PPM

1 078 343

handled claims

26 192 562

policies

~4 vehicles in 100
with reported damage

average damage amount

PLN 8 178

804 006

handled claims

7 458 006

policies

~ **11** vehicles in 100
with reported damage

average damage amount

PLN 6 803

VIII. NUMBER OF NON-LIFE INSURANCE POLICIES

55 729 660
total number of all
non-life insurance policies at the end of 2020

26 192 562
number of
motor third
party liability
insurance
policies at
the end of 2020

7 458 651
number of motor hull insurance policies at the end of 2020

compulsory farm buildings insurance

1 715 315 policies

compulsory farmers' third-party liability insurance

1 520 529 policies

X. HEALTH INSURANCE

3 727.7 thousand number of private health insurance policyholders

PLN 940.7 million private health insurance gross written premium

XI. BANCASSURANCE

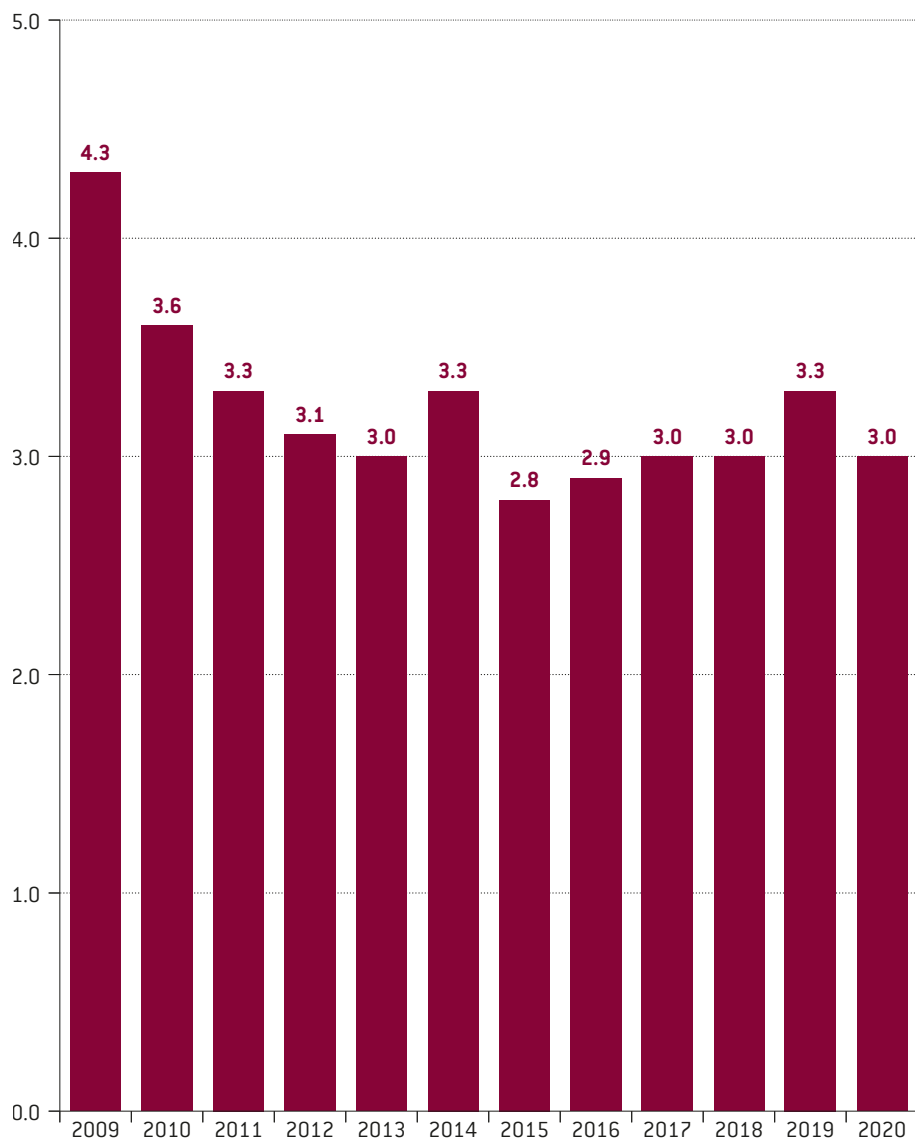
17.7% bancassurance
share in life
premium

life premium from
the bancassurance
channel
PLN 3.7 billion

non-life premium
from the bancassurance channel
PLN 1.9 billion

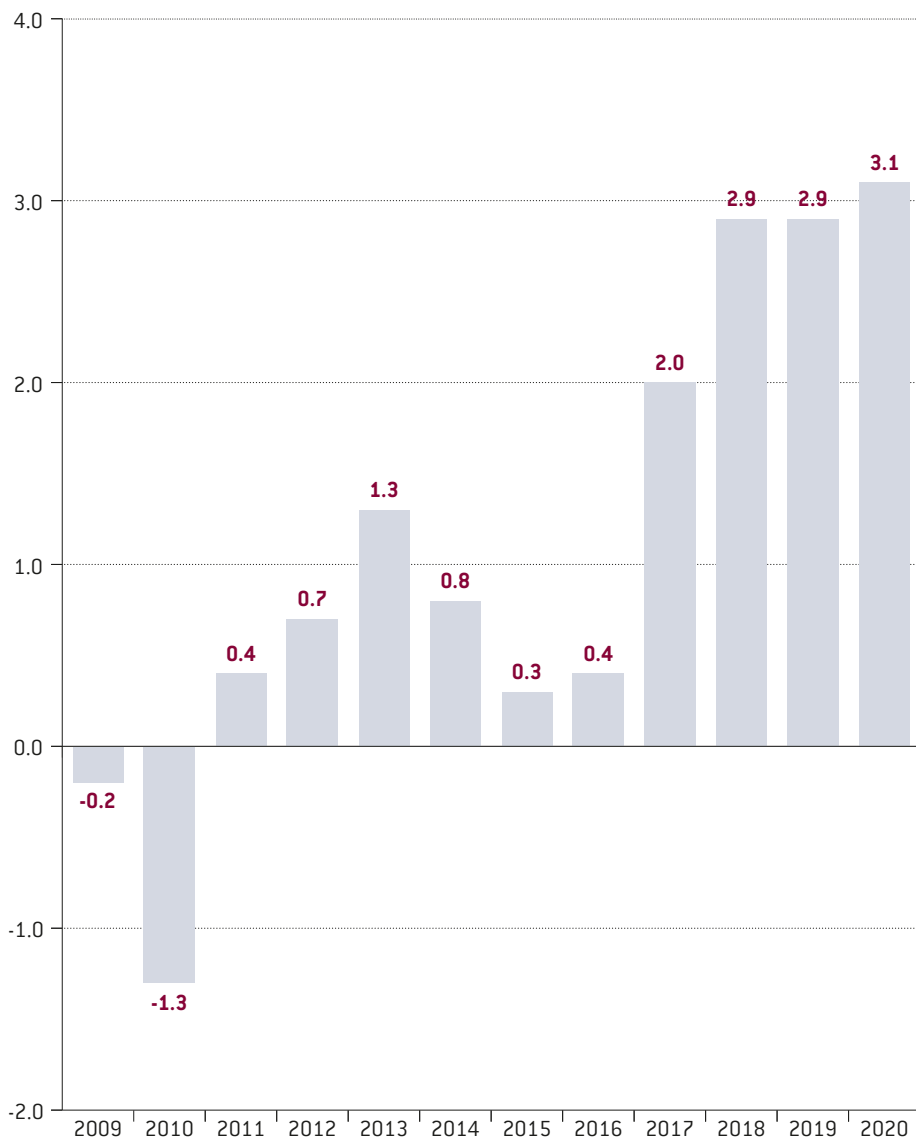
XII. INSURANCE ACTIVITY TECHNICAL RESULT

Figure 8. Life insurance technical result (PLN billion)



Source: Polish Chamber of Insurance, Polish Financial Supervision Authority

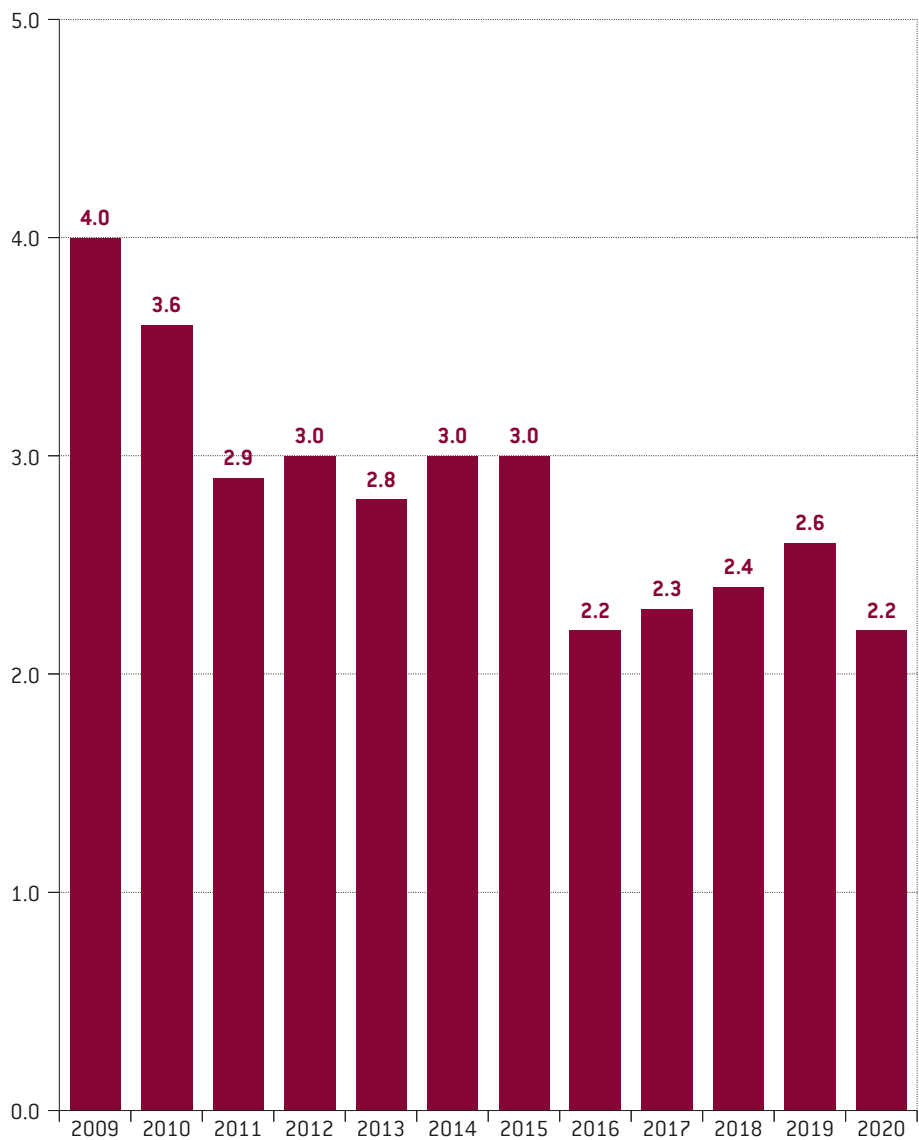
Figure 9. Non-life insurance technical result (PLN billion)



Source: Polish Chamber of Insurance, Polish Financial Supervision Authority

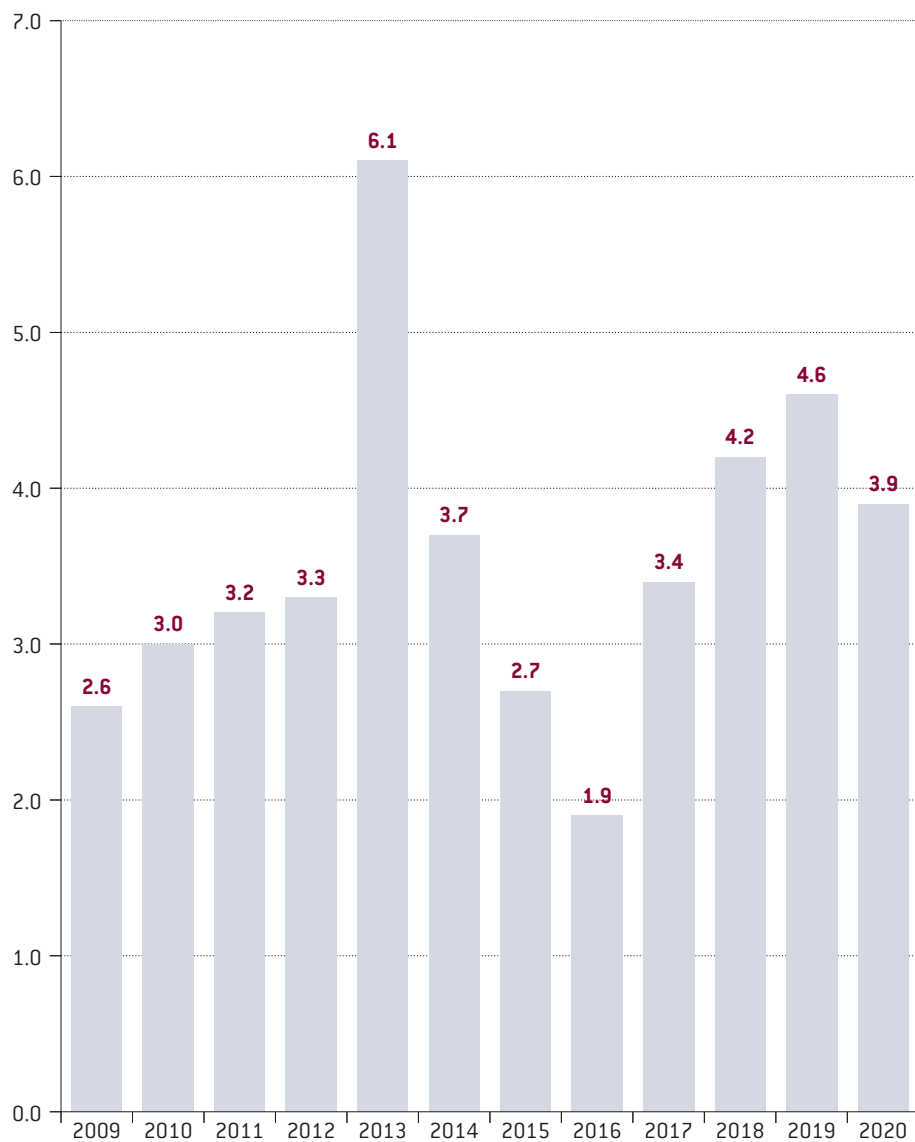
XIII. INSURANCE ACTIVITY FINANCIAL RESULT

Figure 10. Net financial result of life insurance companies in Poland (PLN billion)



Source: Polish Chamber of Insurance, Polish Financial Supervision Authority

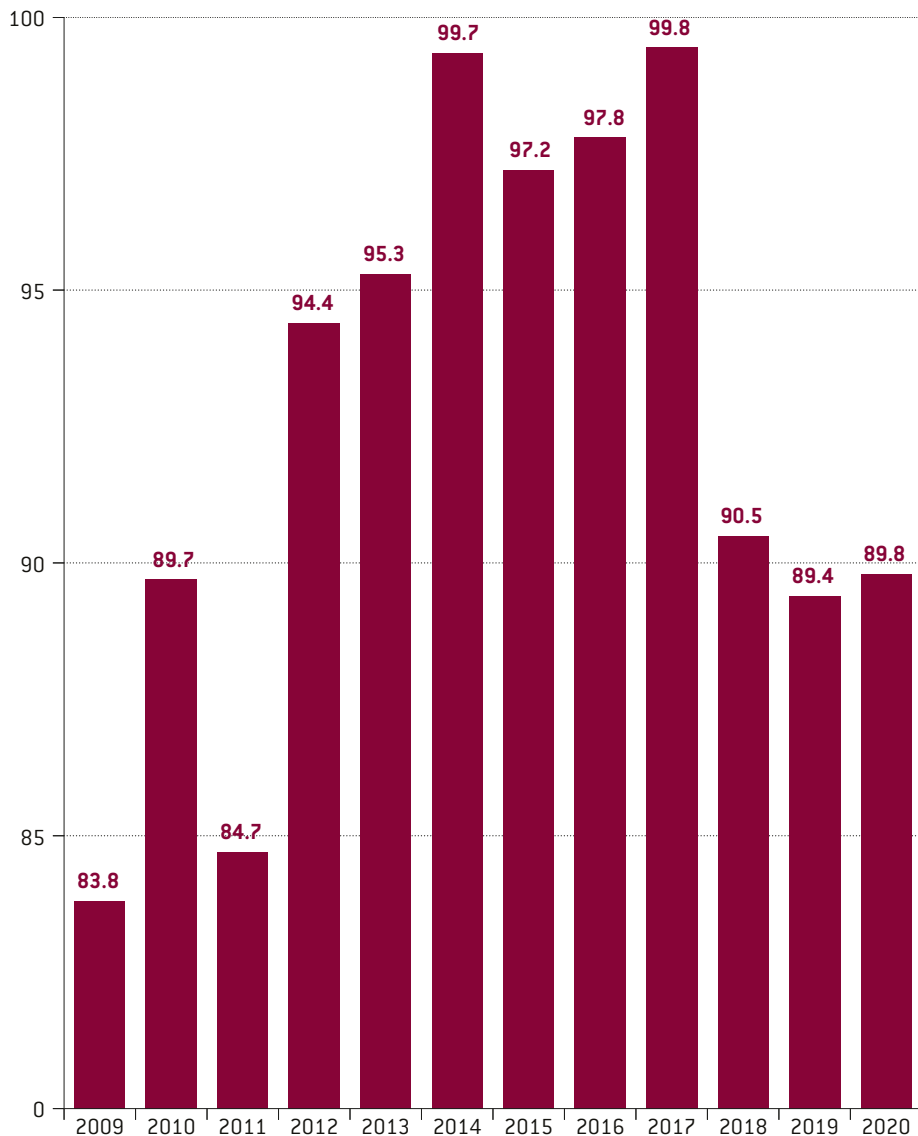
Figure 11. Net financial result of non-life insurance companies in Poland (PLN billion)



Source: Polish Chamber of Insurance, Polish Financial Supervision Authority

XIV. INSURANCE COMPANIES' INVESTMENTS

Figure 12. Investments of life insurance companies (PLN billion)



Source: Polish Chamber of Insurance, Polish Financial Supervision Authority

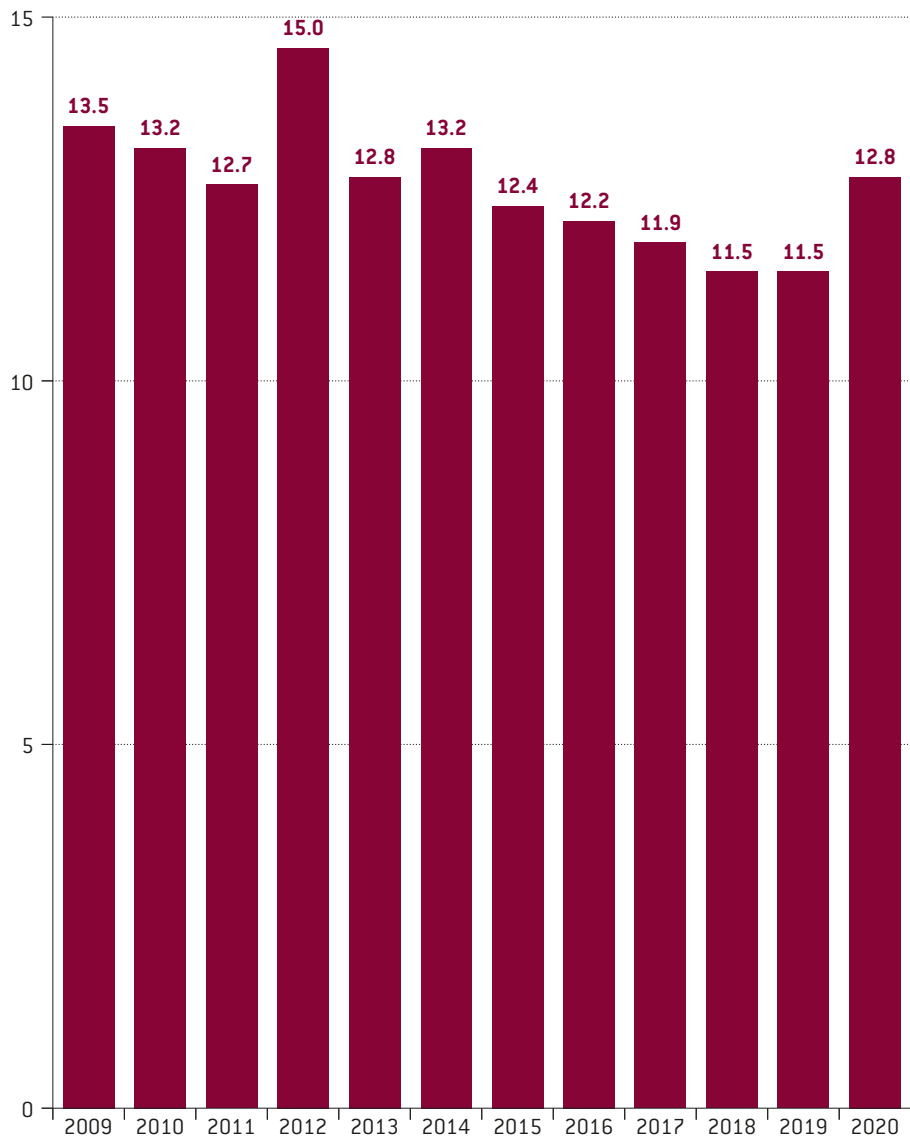
Figure 13. Investments of non-life insurance companies (PLN billion)



Source: Polish Chamber of Insurance, Polish Financial Supervision Authority

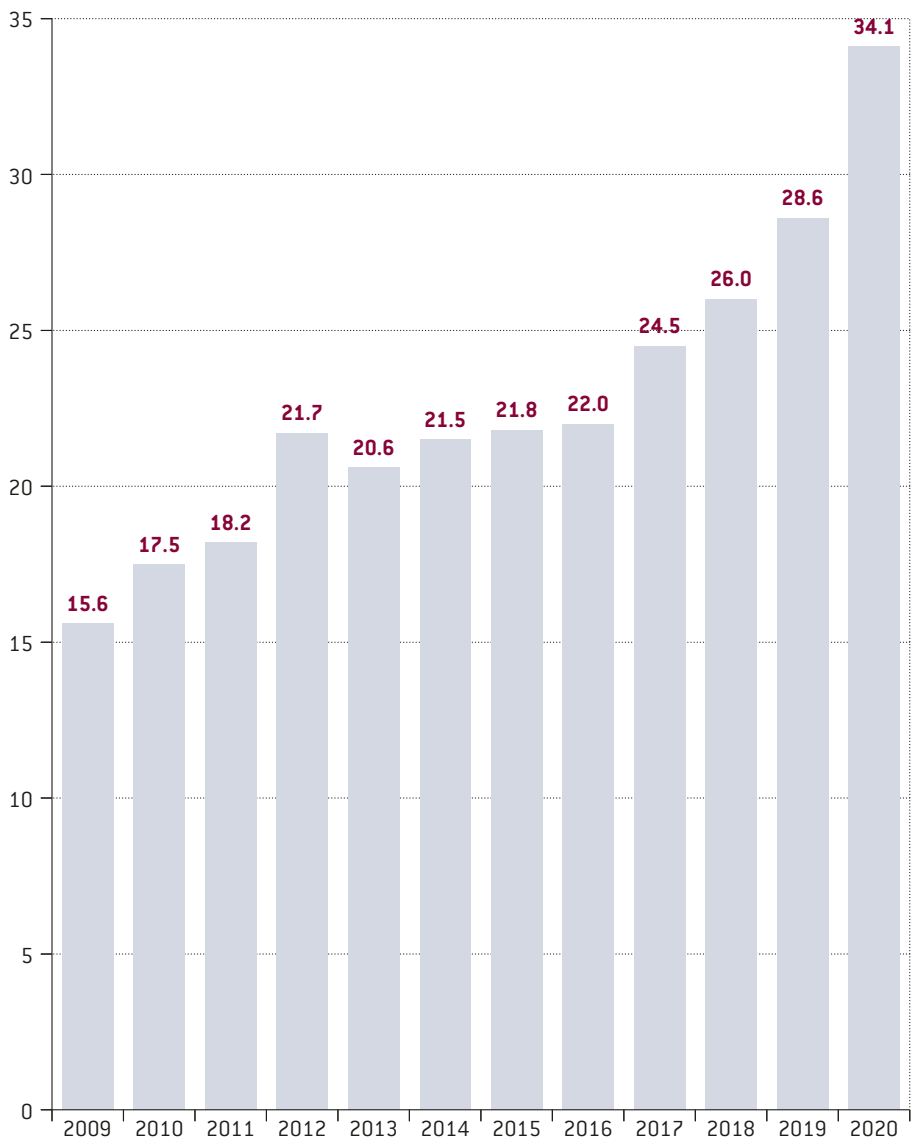
XV. INSURANCE COMPANIES' EQUITY

Figure 14. Equity of life insurance companies (PLN billion)



Source: Polish Chamber of Insurance, Polish Financial Supervision Authority

Figure 15. Equity of non-life insurance companies (PLN billion)



Source: Polish Chamber of Insurance, Polish Financial Supervision Authority

XVI. INSURANCE AND REINSURANCE COMPANIES, BROKERS AND AGENTS







Polish Chamber of Insurance

00-105 Warszawa, ul. Twarda 18

tel.: +48 22 420 51 05

office@piu.org.pl

www.piu.org.pl